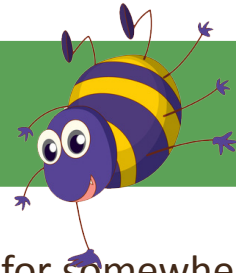




Interesting Places to Visit, Fun Activities and Wildlife Facts - something for all the family!

## Build a Bug Bungalow!



It's the time of year when many small insects are looking for somewhere safe and sheltered to spend the winter. There are lots of different ways of making bug houses and you can use a variety of material to fill them e.g. straw, dried reeds or bamboo canes.



The filling may need cutting down to size before the activity. Any hollow plant stems can be cut into 10-20 cm long sections. Bamboo canes have sealed nodes, cut them so that long hollow sections are exposed; they come in a variety of internal diameters, those up to 1 cm will be used by some species of bee.

### Method one

#### What you need:

20-30 bamboo canes (all the same length about 10-15 cm long, various diameters)

String - 1 metre

Plastic bottle/plant pot/yogurt pot (any size)

#### How to make:

1. Cut the top of a plastic bottle so that the base is 10-15 cm long.

2. Pack the canes into the bottle.

3. Tie the string tightly around the tube at 2 points.

Now connect these loops with a loose length of string to make a handle.

4. Alternatively, add straw to the bottom of the container and around the tubes - this provides homes for other insects.

5. Choose a sunny spot of fence, wall or shed to hang up your bungalow. Make sure it is level and protected from rain.



Continued on next page...



## 'Build a Bug Bungalow' continued...

### Method Two

#### What you need:

- Cardboard tube (any size)
- String 1 metre
- Straw/bamboo canes/dried reeds/art straws
- Sticky tape
- Colouring pens/pencils

#### How to make:

1. Decorate your cardboard tube
2. Fill the centre with your chosen material - make sure it's tightly packed.
3. Attach to string for hanging.
4. Choose a sunny spot of fence or wall or shed to hang up your bungalow. Make sure it is horizontal and well protected from rain.



### Method Three

#### What you need:

- Corrugated cardboard
- Small brown cardboard tube (e.g. cling film tube)

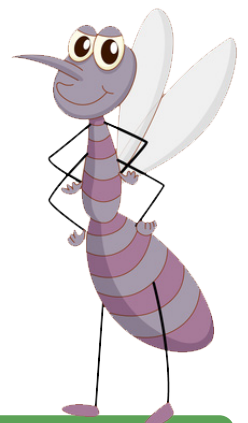


#### How to make:

1. Decorate the small brown cardboard tube.
2. Roll up some corrugated cardboard and place it inside the cardboard tube
3. Place the tube amongst a pile of rocks.



These are activities Macclesfield RSPB Wildlife Explorers are using to support The RSPB's Giving Nature a Home campaign. If there's no home for nature, there's no nature. Homes are where we eat, where we sleep, and where we bring up our families. It's just the same for birds and wildlife. Whether you make a nestbox, an insect home, plant a tree or some wildflowers you'll be doing your bit on your doorstep to **Give Nature a Home**.



Thank you to Tina Hanak, Group Leader of Macclesfield RSPB Wildlife Explorers for sharing this informative activity. For more information please contact Tina on 07870 804413 or visit [www.macclesfieldrspb.org.uk](http://www.macclesfieldrspb.org.uk)